

**Next Town Council Meeting**

**Wednesday, February 3rd at 7:00**

**EF/HG Fire Station**

**Town Council and Community Foundation elections**

**New OMWD Pipeline**



*From the Chair*

*By Melanie Fallon*

Happy New Year everyone! I hope you are staying warm as we all try to be environmentally conscious and conserve our propane and use our fireplaces! I have lots of good info to share –

**WE HAVE A NEW EDITOR FOR THE CHAPARRAL!!!!!!!** - Just in case you can't tell, I am so very happy to report that Betsy Keithley has volunteered to be the new editor of the Chaparral, so be nice to her! You will notice that the newsletter also contains articles from our community partners – the Fire Department, The Escondido Creek Conservancy, The Community Foundation, and The Landscape Foundation so you get all the news at one time. We thank them for agreeing to financially support the costs of producing the Chaparral. As you find that you have news, articles or classified ads that you would like to place in an upcoming Chaparral (they are published quarterly so they come out February, May, August and November) send your articles to Betsy at [ekeithley@ucsd.edu](mailto:ekeithley@ucsd.edu). Again, thank you Betsy!

**OUR NEWLY SPRUCED-UP MONUMENT SIGNS ALONG ELFIN FOREST ROAD** – Has everyone noticed how beautiful all of the monument signs look along Elfin Forest Road? Thank you everyone who volunteered to clean up and replant California Poppies, bulbs and succulents around the monuments. They are looking good – and the poppies and bulbs are sprouting up everywhere! And, a big thank you to the Trails Committee and Bonnie Baumgartner for organizing this!

**JANUARY GENERAL MEETING** – Our January meeting was well attended and we had some good discussions about a number of issues:

The proposed OMWD pipeline – see article in this newsletter

Planning Commission approval of our Community Plan – see article

A proposed park on the old Pecoff property – the Town Council and everyone in attendance (about 40 people) voted unanimously to reject the concept based on a lack of a mandate from the community and the fact that the adjacent property owners do not support a park.

B.J Williams from the San Diego County Sheriff's Dept reported that one of the "party houses" in Harmony Grove located in the proposed HG Village area has been demolished. This house was connected to a fatal DUI accident on Harmony Grove Road in mid-December.

**UPCOMING TOWN COUNCIL COMMUNITY MEETINGS – FEBRUARY 3, 2010** – Elections - Town Council Board Members and Community Foundation Board members. **Presentation** by OMWD of proposed pipeline (see article)

**SAVE THE DATE – APRIL 3, 2010      ELFIN FOREST GARDEN FESTIVAL**

That is all for now, but remember if you have any issues or thoughts, just let me know. You can reach me at 760.744.7090 or [mfallon1@att.net](mailto:mfallon1@att.net)

## *Elfin Forest/Harmony Grove Town Council Election*

### Candidate Statements

**Nancy Goodrich**— I am a relative newcomer to the Elfin Forest/Harmony Grove community, but I have been amazed at the dedication of the residents here in actively protecting their rural lifestyle and participating in the determination of their community's future. I am interested in serving on the Town Council so I can learn more about the relevant issues, work towards resolution of community problems and do my part to preserve the exceptional quality of life we have here.

I retired from the San Diego Police Department after 30+ years as a police officer, including seven years at the rank of captain and nine years at the rank of assistant chief. I have extensive experience working with various levels of government, business groups and community organizations. I have also served in numerous community boards and organizations, including the San Diego Blood Bank, Salvation Army, Soroptimist International of San Diego, San Diego Metropolitan Credit Union, Copley YMCA, United Services Organization, San Diego Food Bank and Lead San Diego, Inc.

**May Mientjes** - Incumbent, Treasurer. May has served on the Town Council Board for several years and does a wonderful job keeping track of the money and filing the required forms, like taxes, for the corporation.

**Jacqueline Arsivaud-Benjamin**— My husband and I bought our lot on Paint Mountain Road in 1989 and moved into our new home in 1991. I moved to Elfin Forest because after having grown up on a farm in France, I really value peace and quiet, open spaces and seclusion; we also wanted to raise our kids-to-be at the time in the California equivalent of "the country". They are now 19 and 16, times flies...

At the time I worked for Hewlett-Packard in Product Management (after a degree in Political Science and Economics and an MBA in International Business) and later started my own company in a related high tech field, which I sold in 2000.

I was first elected to the Board in 2006, and have since then tried to give back to the community whose quality of life has been safeguarded all these years by the efforts of others. On the Board I have focused primarily on conservation and fundraising. I have chaired the Bridges Subcommittee and led the effort to prevent the Bridges at Rancho Santa Fe from bringing suburban sprawl to Elfin Forest. Efforts there resulted in the largest developer in the country, Lennar, withdrawing the application they had been working on since 2001. Since then I have led the effort to preserve that land in perpetuity, through assembling a team of top notch talent, many from outside our community, and creating Friends Of The Creek, a nonprofit which sued Lennar and has brought them to the negotiation table. Our combined efforts resulted in the grant of \$6 million in conservation funding allocated to our community last Spring. In order to generate the funding to finance the efforts described above, I have also revived the Garden Festival which was perilously close to going defunct for lack of a Chair, and brought in record proceeds. Fundraising was supplemented by income from the 4th of July Silent Auction.

Besides raising and spending money, I also chaired the Boundary Subcommittee which redrew the boundaries of Elfin Forest and Harmony Grove to include the newest residents and prevent future land grabs by outside developers. The Conservation Subcommittee which I also started and chaired played a key role in coordinating the efforts of several conservancies to systematically target open space in a strategic fashion, and initiated the concept of developing a Case Statement for the valley, which after generous funding from TECC is about to become a reality. I also continue to chair the Communications Committee which has revived the Welcome Wagon for newcomers, revamped the Chaparral distribution strategy, and launched the Facebook town council page.

Besides my service on the Town Council and as president of Friends of the Creek, I also spearhead the effort to gate Canyon de Oro and Suerte Del Este, as president of the Paint Mountain Association, with the goal of protecting our mountain from the fire risk from arson and bonfires, and from traffic and dumping. Lastly, I was also elected in June 2008 to a seat on the San Dieguito Planning Group.

Thank you for your vote and come join us on the Board, there is lots to do!

**Minoo Sohaey**—She has lived on Paint Mountain Road for 3 years and would like to contribute to the Community by working to keep it safe, clean and beautiful. Prior to retiring to Elfin Forest she was the office manager for a Medical, Surgical practice in Chicago. She has a Master's Degree and has served on several community service boards including the Iranian Cultural Society where she was President and the Lion's Club of Iran where she was Vice-President.

*Elfin Forest/Harmony Grove Town Council  
Election of Board Members*

**Town Council Ballot — vote for up to 6**

- \_\_\_\_\_ Nancy Goodrich
- \_\_\_\_\_ May Meintjes
- \_\_\_\_\_ Jacqueline Arsivaud-Benjamin
- \_\_\_\_\_ Minoos Sohaey
- \_\_\_\_\_ Write-in
- \_\_\_\_\_ Write-in

Please either:

- 1) Mail the ballot to the Fire Station addressed to the Town Council by Feb 3
- 2) Bring the ballot to the meeting on Feb 3
- 3) Drop the ballot in the ballot box at the Fire Station before the meeting on Feb 3

cut here

**Town Council Ballot — vote for up to 6**

- \_\_\_\_\_ Nancy Goodrich
- \_\_\_\_\_ May Meintjes
- \_\_\_\_\_ Jacqueline Arsivaud-Benjamin
- \_\_\_\_\_ Minoos Sohaey
- \_\_\_\_\_ Write-in
- \_\_\_\_\_ Write-in

Please either:

- 1) Mail the ballot to the Fire Station addressed to the Town Council by Feb 3
- 2) Bring the ballot to the meeting on Feb 3
- 3) Drop the ballot in the ballot box at the Fire Station before the meeting on Feb 3

## 2009 COMMUNITY SERVICE AWARDS

*By Melanie Fallon*

Twenty annual community service awards were presented this year to many deserving Elfin Forest/Harmony Grove residents and non-residents for their hard work and devotion to our community.

For the many awesome conservation activities that occurred this year, the Town Council honored the following 5 individuals -

**Steve Barker** on behalf of TECC for serving again as TECC's president and leading the organization on many land acquisition fronts, but especially for the Family Stations acquisition.

**Leonard Wittwer** for bringing his considerable experience to the Town Council's Conservation Committee, leading TECC's participation in the effort to develop a case statement for the area and playing a key role in the conservation of local open space.

**Kevin Barnard** for his focus on conservation of open space and his active role on the Town Council's Conservation Committee.

**Ann Van Leer** from Land Conserve Brokerage for assisting our community in key open space acquisitions, especially the purchase of the Family Stations property.

**Michael Beck** from the Endangered Habitats Conservancy for his tireless efforts on behalf of our community to preserve our endangered gnatcatcher habitat and for securing \$6 million of public funding for saving our wonderful open space habitat.

The following individuals were also honored for their commitment to our community during this past year:

**Jeff and Carolyn Swenerton** for their dedication and hard work leading the effort to bring us the best 4<sup>th</sup> of July party ever!

**Joe Benson** for having fulfilled the role of our webmaster for years, promptly and efficiently updating the Town Council's website.

**Minoo Sohaey** for her sense of organization and persistence in taking on the role of coordinating the welcome committee for newcomers.

**Nancy Reed** for her nine years of service to the greater community on the San Dieguito Planning Group.

**Shelley Fontaine** for her leading role in bringing DSL into our Valley. YEAH!

**Joe Alemanni** for flagging down that SBC truck and agreeing to have the DSL equipment placed on his property.

**Eveline Bustillos** for organizing the first community garage sale.

**Zana Parman** for spearheading the Town Council's first foray into social networking with our Facebook presence and for getting a newsletter out in the face of serious health challenges.

*Service Awards cont.* **Peggy Petitmermet** for soldiering on valiantly as head of the block captains in the face of many challenges.

**Claudia Costanzo** for her key role in organizing the Town Council's 4<sup>th</sup> of July Silent Auction.

**Eric Anderson** for having organized a wonderful 4<sup>th</sup> of July parade and for his years of quiet but effective service on the Town Council including on the Bridges and Conservation Committees.

**May Meintjes** for being such an effective Treasurer for the Town Council and for organizing and coordinating all the games at the 4<sup>th</sup> of July picnic.

**Bonnie Baumgartner** for all the great work she has done on her first year on the Town Council by volunteering to chair the 2010 Garden Festival Committee and by revitalizing the Town Council's Trails Committee.

**Jacqueline Arsivaud-Benjamin** for all she does for our community on the Town Council including chairing the Conservation and Communications Committees, working on the Bridges development and overall just being there to make sure that our community is the best it can be.

**Melanie Fallon** for her role as chair of the Town Council and for leading the General Plan and Community Plan work with the County of San Diego.

## *Elfin Forest Loses a Great Friend and Advocate* *By Betsy Keithley*

Sue Varty passed away in August of 2009 shortly after the Interpretive Center at the Elfin Forest Recreational Area was dedicated to her. I would like to acknowledge and remember her here because she did so much to preserve and contribute to Elfin Forest. Her major contribution to our community was through her 15 years as a Director on the Board of the Olivenhain Municipal Water District where she worked to maintain financial stability in the operations and therefore keep water rates under control.

But I would also like to remember her for her sense of humor. Most notable was her presentation at the 10th anniversary of the 1996 Harmony Grove fire. She related her tale of gathering children and animals in the car and evacuating to a hotel. It was humorous and tender and expressed the panic and fear of the moment with wonderful insights into human behavior gained on retrospection. She always said "I don't live in CSA 107", but she sure did. We miss her.

## *News From the Landscape Foundation* *by Susan Oddo*

What a success the street sign monument beautification day was! A huge thank you to all of the Elfin Forest residents who came out to weed, mulch, create rock borders, and spread California Poppy seed. Wasn't it wonderful that all this happened on the weekend before the rain! They will look wonderful in time for the garden festival. Thank you Bonnie Baumgartner and block captains, too, for pulling this all together.

The Foundation would like to make a special commendation to the Fredericks for how amazing their section of the trail along Elfin Forest Road looks. They added more California Pepper Trees on each side of the trail forming a manicured, shady tunnel under which to walk or ride. They trim their section of trail grasses and trees twice a year. On the upper bank (which they can't see but we trail users can) they have thoughtfully added mounds, boulder clusters and planted grasses and ground-hugging Bougainvillea. When a fence rail is down they put it back up, when a rail or post is broken, they replace it. They have set the standard very high for all of us and we want to thank them for such a generous and ongoing contribution that we all can enjoy every day.

*Continued on p7*



## *STATUS OF THE ELFIN FOREST/HARMONY GROVE COMMUNITY PLAN*

*By Melanie Fallon*

We continue to work with the County planning staff on getting our local community plan adopted and approved by the County. The timeline for final approval by the Board of Supervisors of the County's new General Plan and all of the various Community Plans is scheduled for fall of this year.

One of the milestones along this approval path was the public hearing and approval by the County's Planning Commission of our Community Plan. This hearing was held on December 4, 2009. Eric Anderson and I attended and testified before the Commission. We have had great support and a good working relationship with the staff and we have been in agreement with them on all aspects of our community plan with two exceptions and we testified as to these two areas. They are:

### **HARMONY GROVE MEADOWS**

The Harmony Grove Meadows project is approximately 124 acres and is located southeast of Country Club Drive. The property was owned by Sun Cal and 3 years ago they were proposing a 200+ unit development on this site, but unfortunately for them (and fortunately for us!) the economy killed their project. Therefore it is of utmost importance to get the General Plan designation correct on this property so that when the economy turns around we will have more comfort with its future use.

The following language was submitted to the Planning Commission in our November 20, 2009 letter to them and it is the argument that we made at the public hearing. "...this area is known as Harmony Grove Meadows and the staff is now recommending the hybrid land use alternative of SR2 and RL20. We disagree with this alternative and continue to support the draft land use map alternative of SR2, SR4 and RL20. The staff's hybrid recommendation could allow an extra 19 units on this property which we believe is too many more units for two reasons: a) much of this property is in a critical biological resource area and b) most importantly, the future land use of this property has been debated and planned by the community and DPLU staff for years as part of the Harmony Grove Village Specific Plan process. The Harmony Grove Village Specific Plan was adopted by the Board of Supervisors in February 2007. While this property is not specifically within the Specific Plan Area (SPA) it was agreed that the area surrounding the SPA was to follow the Village Development pattern, with a lower level of development transitioning away from the SPA. The draft land use plan alternative reflects the correct density for this property in relationship to the higher density Harmony Grove Village."

The good news is that the Planning Commission unanimously supported us on our request and agreed to SR2, SR4 and RL20 designations which effectively would allow a maximum of 25 to 30 units on this property.

### **BRIDGES UNIT 7**

The Bridges Unit 7 project, approximately 80 acres, located at the Southwestern end of Elfin Forest adjacent to Rancho Santa Fe. While not currently being considered for development by Lennar, we continue to try and make sure that the General Plan designation on this property is consistent with our community standards. The following argument was made by the Town Council in our November 20, 2009 letter to the Planning Commission and presented verbally at the December 4 public hearing.

"...this area is known as Bridges Unit 7 and we continue to believe that this property should follow the density reflected in the Environmentally Sensitive Map of SR4 instead of SR2 as recommended by the planning staff. Ideally this area should be preserved as open space. It contains the most critical habitat of any open space left in Elfin Forest and is located in the very core of the gnatcatcher area. This is extremely sensitive environmental habitat for coastal sage scrub and the California gnatcatcher. In fact, in 2006 during the

*(Continued from page 6)*

environmental review process for the possible development of this site, evidence was presented by independent biologists to County staff as to the high value of the habitat contained in Lennar's Unit 7 property. That information led the staff to change their recommendation from approval to denial of the proposed project on this site. The August 25, 2006 staff report concluded: "Based on the findings of the ISA, the applicant's responses and additional information received from the noted environmental professional, the Department believes that development of either alternative for Unit 7 may lead to extinction of the CG Core Area population."

Unfortunately on this property, the Planning Commission was not to be convinced. On a vote of 4 in favor (Day, Riess, Woods, Pallinger), 2 against (Norby, Brooks) and 1 abstain (Beck) our argument failed. So this property has a proposed general plan designation of SR2 which would allow 1 unit per 2, 4 or 8 gross acres, the same as the rest of the Bridges at Rancho Santa Fe. Efforts continue to purchase this property for conservation.

We still need to work towards the Board of Supervisors meeting in the fall as they are not likely to support much of the staff or the Planning Commission recommendations in our Community Plan, but we continue to strategize and work toward a plan that all of us in the Valley can be proud of. More info later as we know something or need your help in lobbying our Supervisor!

## *Jerry Varty Joins the OMWD Board of Directors*

I would like to introduce myself to those of you whom I have not met. My name is Gerald (Jerry) Varty; I have lived in the Elfin Forest area for 22 years and have recently joined Olivenhain Municipal Water Districts governing board as director of OMWD's Division #4, which covers the Elfin Forest/Harmony Grove area. In my short time serving as an OMWD Board Director, I have found it to be an efficiently and ethically administered, forward-thinking organization priding itself on responsible use of public funds and long-range sustainable water supply planning and development. As your water service provider and a neighbor in our community, most of you interact with OMWD in one way or another. As your representative to OMWD, I plan to work diligently for you through the end of my term in December and, with your support in the November 2010 election, in the coming years as well to ensure that OMWD hears the voice of our unique community. I invite you to share with me any water-related concerns that you may have, and I look forward to discussing these with you. In the meantime, please rest assured that despite the water-related challenges facing California, you have an engaged and dedicated Board of Directors committed to serving the same safe, reliable, and high-quality drinking water as ever before. Thank you for the opportunity to serve. Jerry Varty

## *Landscape Foundation News*      *continued from page 5*

We hope you are inspired to come out and work on the trails. There is a continual need to remove pesky start-up Eucalyptus, reset rails, straighten fence posts, secure split fence posts with zip ties (the black eighteen inch ones work best – Home Depot or Lowes), trim back growth intruding into the trails or hanging down too low overhead. You might have noticed the shallow drains that are intended to divert water to the sides of the trail whenever (soon please!) it rains. As we walk or ride over them they break down and need rebuilding. Usually just stopping on your walk and using your foot to push the sides back in place is enough. Pick one day a month to walk the trail with a plastic bag and gloves picking up trash. Remind your workers who use the trail to discard waste in trash cans. If you have a free day and want to work with us on trimming the low parts of the trees we *really* could use your help. Just send an email to [soddo@earthlink.net](mailto:soddo@earthlink.net) and we'll coordinate a trimming party. Remember that Elfin Forest does not have a means for funding maintenance so it is up to us to do what each of us can to keep our trails looking trimmed, tidy and inviting.

## *Elfin Forest Community Foundation Election of Board Members*

The Elfin Forest Community Foundation was established in 1995 with an endowment that came from money collected from those who used the now-closed County landfill in San Marcos. The Foundation's mission is to enhance the quality of rural life in the community of Elfin Forest. The Board of Directors decides Foundation policy and what projects will be funded. They are also financially responsible for the funds in the Foundation. The annual Board Member election will occur in February, 2010 at the time of the Town Council elections. The term is 3 years with a minimum of 2 face-to-face meetings per year to review grant applications that are due in April and October.

The Board has three open seats and the incumbents, Gini McManus, Mike Vallee, and Frank Twohy are running for re-election.

Please mark the ballot below (2 per household) and make sure it is at the fire station on Wednesday, February 3, 2010 where the ballots will be collected and counted at the Town Council meeting.

Vote for three:

Gini McManus: \_\_\_\_\_

Mike Vallee: \_\_\_\_\_

Frank Twohy: \_\_\_\_\_

Write in: \_\_\_\_\_

\_\_\_\_\_ cut here \_\_\_\_\_

Vote for three:

Gini McManus: \_\_\_\_\_

Mike Vallee: \_\_\_\_\_

Frank Twohy: \_\_\_\_\_

Write in: \_\_\_\_\_



# Fire Department Celebrates Firefighters at Awards Dinner —December 2009

## Our Volunteers are Professional

The Elfin Forest / Harmony Grove Fire Department Inc. is fortunate to have many talented men and women on staff. The job of a firefighter is all encompassing, and a professional firefighter is completely dedicated to the fire service and its constant improvement. A professional firefighter is an expert and master of his or her profession and craft.

The annual Holiday party is a fun time that brings the firefighters, the board, the auxiliary, and their spouses together. The community is not always aware of what goes on at the fire department on a day to day basis. So this is a time that the community can get to know the firefighters and officers that serve Elfin Forest and Harmony Grove. So many times community members drop by the station to say hello, drop off a donation, or even a special treat for the firefighters and it gives the firefighters the opportunity to actually know who you are. Every year it seems like the party gets a little bit bigger and it is fun to watch firefighters get awards for their achievements that year. This year we look forward to serving the community as we always have, swiftly and with professionalism unmatched anywhere. We thank you for your support!



Story by Nona Barker and Mike Martinez

Photos by Carol Rayes

*The following awards, certificates and milestones were presented.*

### Firefighter Badges

These firefighters have been a member of the department for one year or more, completed a Fire Academy, and finished all task books and extra assignments.

- Brennen LeClair Daniel Aker
- Shepard Casey Kevin Krainock
- Nate Sanford Ryan Works
- Cory Iverson Marc McKinley
- Gabe Tieman

### Fire Academy Graduates

- |                 |                          |
|-----------------|--------------------------|
| Daniel Aker     | Palomar Fire Academy     |
| Marc McKinley   | Palomar Fire Academy     |
| Nate Sanford    | Palomar Fire Academy     |
| Kevin Krainock  | San Pasqual Fire Academy |
| Phil Johnson    | San Pasqual Fire Academy |
| Ryan Works      | Cal Fire SLO             |
| Gabe Tieman     | Cal Fire SLO             |
| Brennen LeClair | Cal Fire SLO             |
| Shepard Casey   | EFF Volunteer Academy    |

### Full rank (from probationary) Captains

- Mike Martinez
- Henry Vanzinni

### Paramedic School Graduates

- Robert Berkey
- Mike Roy
- Nick Cardone

### Driver Operator position

- Dan Aker
- Shepard Casey
- Ryan Works



**AWARDS**

***Firefighter of the Year***

***Mike Roy***

We are pleased to announce the annual award for Firefighter of the Year goes to Firefighter Mike Roy. His peers selected Mike for "Recognition and appreciation of outstanding dedication and commitment". Joining the Department in February 2007, Mike soon rose to the position of driver operator. All members of the department embraced his natural leadership. This past year, Mike completed his paramedic training and is one of our members hired by Carlsbad Fire Department. Congratulations Mike Roy.

***Probationary Firefighter of the Year***

***Marc McKinley***

Marc was awarded Probationary Firefighter of the Year for his determination to be the best probationary firefighters. Marc embraced his membership to the department by completing his task books and taking on many extra assignments. His dedication, leadership and his always-smiling attitude made Marc an easy winner for this award.

***Superior Training Attendance***

***Kevin Krainock***

This award is given to the member who attends the most required trainings. Kevin not only attended almost 100% of the required trainings, but also attended a fire academy and the ten extra training days not required. That is dedication.



**Special Certificates**

PAINTING OF FLOORS AND GENERAL STATION CLEAN UP

Ryan Works                      Ryan Ferguson  
Kevin Krainock                Chris Vail

COMPLETION OF THE LOCKER AND DAY ROOMS

Brian Kuklinski  
Phil Johnson

**Recognition for Length of Service**

Byron Macfarlane    10 years  
Nona Barker            15 years



**And finally Farewell to the following who have moved from EF/HG Fire to a paid position**

Cory Iverson                      Cal Fire  
Robert Berkey                    Carlsbad Fire Department  
Mike Roy                            Carlsbad Fire Department

**Or Retired**

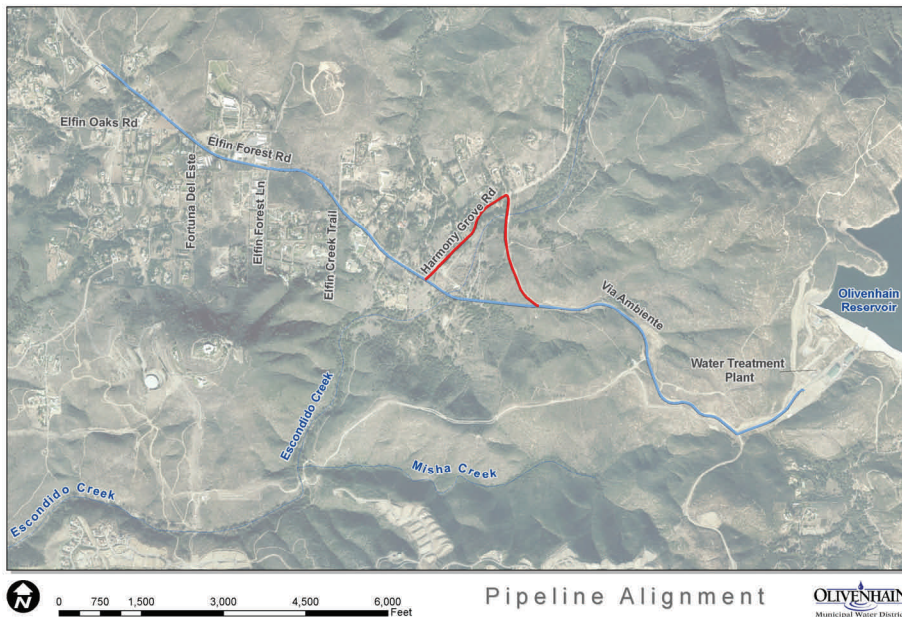
Mike Shea    volunteered for 7 years.  
Darrin Lee    volunteered for 16 years.

## *Olivenhain MWD to Construct New Pipeline in Elfin Forest*

*By Joey Randall, OMWD*

The Olivenhain Municipal Water District (District) is in the planning stages for the construction of a new 48" water pipeline in the Elfin Forest Community which will deliver water for treatment to the District's David C. McCollom Water Treatment Plant. The pipeline is needed in order to avoid potential water quality impacts resulting from the San Diego County Water

Authority's (Authority) Pumped Storage Project which will put water from Lake Hodges into the Olivenhain Reservoir. The pipeline will be constructed in Elfin Forest Road beginning from a point approximately mid way between Fortuna Del Sur and Elfin Oaks Road to the intersection of Elfin Forest Road and Harmony Grove Road. The pipeline will then be constructed in a southerly direction to Via Ambiente



Road which it will follow to the treatment plant (see figure). As part of a mediated settlement with the Authority, they will compensate the District \$13,500,000 for this pipeline.

District staff recently met with an impromptu ad hoc committee consisting of Elfin Forest Community members to discuss the project. Discussion items included road pavement replacement, emergency response coordination, trail avoidance, and other issues of concern to the community. A commitment to work with the community during the design and construction of the project was made by Kimberly Thorner, the District's General Manager. Jerry Varty, the newest member of the District's Board of Directors also affirmed his commitment to continue the District's positive working relationship with the community. Construction of the project is anticipated to begin in late 2010 and be completed in late summer 2011.

District staff will make a more detailed presentation on the project at the February 3<sup>rd</sup> Town Council meeting. The District has successfully worked with the community in the past and looks forward to a successful partnership on this project as well.



## *Hot off the Press!*

*by Melanie Fallon*

At the January Town Council meeting there was some discussion about our proposed Community Plan and whether changing our General Plan designation from SR2 (1 unit per 2, 4 or 8 acres) to SR4 (1 unit per 4, 8 or 16 acres) would render those of us with properties of less than 4 acres legally nonconforming. The short answer is that if you have an existing parcel that is less than 4 acres when the new General Plan is approved then there is no problem. See the email below from DPLU planner Eric Lardy in response to my email inquiry on this issue.

Hi Melanie,

To answer your question, the densities in the General Plan are applicable to the future subdivision and development of land, and nothing the General Plan Update density is doing will affect the ability to build a home on a pre-existing legal parcel. This is explained in a few places, included the [Frequently Asked Questions for the General Plan Update](#), and under the zoning and building forms. Since the information is available, we would prefer to not include the specific zoning and building information in the Community Plan.

Additionally, there is a difference between a General Plan Designation and the minimum lot size in the Zoning Ordinance. For example, the General Plan density could be RL-20, but the minimum lot size could be 4 acres. Having this difference would not increase the yield in any development project, however would help residents if they were interested in adding an accessory unit or processing a boundary adjustment.

Staff has begun initial work on the Zoning Consistency Review, in order to amend the zoning ordinance to be consistent with the new general plan designations, and will be sending the Elfin Forest Town Council a packet in the next week with preliminary recommendations for discussion.

Once you receive this information, and have any questions please do not hesitate to contact us. We can have a meeting with you to explain our recommendations and rationale.

Thank you,

*Eric Lardy*

General Plan Update

Department of Planning and Land Use  
County of San Diego

858-694-2457

[eric.lardy@sdcounty.ca.gov](mailto:eric.lardy@sdcounty.ca.gov)



Elfin Forest Harmony Grove—Elfin Forest Vacation Ranch circa 1960. “One of San Diego County’s finest family recreation spots.” Ames Postcards, Escondido, CA

## *Classifieds* - Please e-mail your ads to Betsy Keithley for inclusion in the next issue

Karlyn Murphy - Babysitter, CPR certified for ages 1-13. Elfin Forest resident. CONTACT INFO cell: 858 229-9799. email: k.murphy.8@hotmail.com

Guest house on gated property - detached upstairs with deck. 1 Bdrm/1 Bath with parking, W/D & Refrig Looking for mature, quiet, single person. Cats ok, no dogs. Available now in Harmony Grove Call for further information. 760-746-4692

Get the best farm fresh eggs from Eli on Faraway Lane, (mom is Mary Ellen). They are only \$3.00 a dozen and are wonderful! These eggs stand up in the frying pan and the yolks are a rich orange color. Eli's Farm Fresh Eggs, 7910 Faraway Lane, 760-510-8229, [elisteria4@gmail.com](mailto:elisteria4@gmail.com). Just stop by and pick up a dozen from the stand out front.

Elissa Benjamin, babysitter, pet sitter, tutoring - born and raised in Elfin Forest, 10th grader at Canyon Crest Academy, own transportation. Red Cross certified, several local references. Call 760-274-5379 or email [beretnoir@gmail.com](mailto:beretnoir@gmail.com).

Ryan Anderson - Baby Sitting/Pet Care. High school junior, responsible, with own transportation. 760-471-5850.

Amanda Clerke – Experienced Babysitter/Pet Care. Elfin Forest resident, La Costa Canyon High School. YMCA babysitter certification. 15 years old. Please call 760-510-0143.

Jessica MacKinnon - Babysitting/Feed Animals, EF Resident, 15 years old, SFC High School - 10th grade, took babysitting course through Red Cross. Contact at 760-744-8955.





# Watershed Voice

*Please join in our conservation efforts by becoming a member - application form on page 6 ...*

## Let's Count Our Blessings by Steve Barker, TECC Board President



How lucky are we to live where we do??? I'm not talking about the fact that it's 70 degrees outside when most of the country is covered in ice or that we can surf year round. That's certainly an advantage to living in Southern California. I'm talking about how lucky we are to live here in Elfin Forest and Harmony Grove and that we live in the epicenter of a globally recognized hotspot of biological diversity and conservation value. When you look out of your kitchen window at these hills realize that you are appreciating one of the last intact and connected tracts of an ecosystem so rare that's it's now considered one of the most threatened on the planet.

Federal, State and County agencies have recognized and appreciate what we may take for granted and that's why they have spent millions to try to buy up from willing sellers many large tracts that were slated for development before the recent collapse of the real estate market. TECC is working hard with these groups to bring agencies and sellers together in an effort to save this precious area now before the government money runs out or the market returns and the bull dozers fire back up.

### **Imagine a Special Place**

Imagine a special place.

Imagine a special place that's home to the rarest plants and animals on the planet.

Imagine this special place where the days of warm sunlight and nights of cool sea air produce, a climate so unique that it's the only place on earth that these plants and animals thrive.

Imagine that people come from all over to study this place.

Imagine that this place is shrinking and may soon disappear.

Imagine that people from all over are working together to save this special place.

Imagine you live in this place and that you love this place too.

Imagine what you'd tell your children you did to save this place.

Imagine this is a place called Elfin Forest or a place called Harmony Grove.

**Support TECC with a donation and save this special place before it's too late.**

*Steve Barker*

What this means for local residents is the incredible good fortune to live next to and surrounded by a park with trails, open spaces and natural vistas all purchased and maintained by other peoples money. Yes Marge, that means our property values are sure to soar when the market returns.

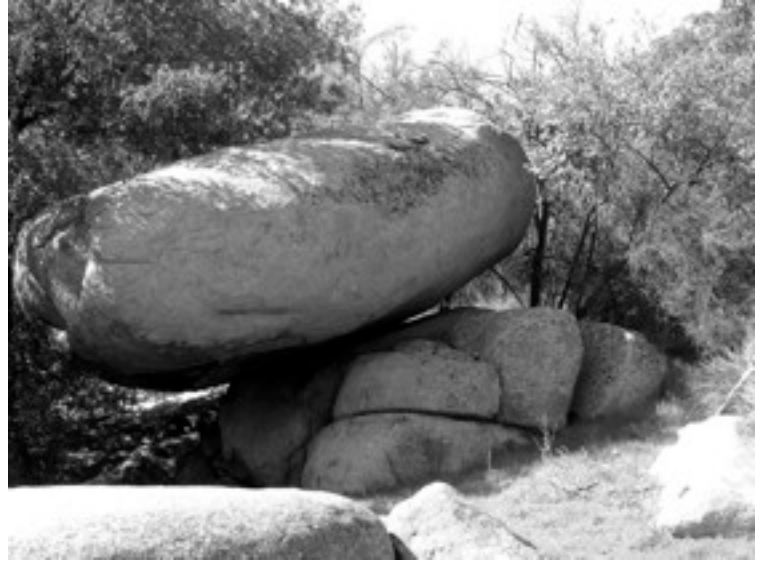
So I'm asking you, neighbor, to help us make this all continue to come true by becoming a member or increasing your TECC membership. A \$100 donation or more to TECC is one of the best investments in the value of your home you'll ever make.

**Thank you, Steve**



# LAND ACQUISITION UP DATE

In our last newsletter we mentioned the 120 acre Family Stations parcel, directly across Harmony Grove Rd. from the Elfin Forest Recreational Reserve (EFRR), was slated to be acquired. We are happy to report that this acquisition is done and an additional 120 acres of rare Coastal Chaparral has been preserved. TECC would like to recognize Ann Van Leer of Land Conservation Brokerage for her hard work, patience, and determination, in seeing this deal through for TECC. TECC would also like to thank the County of San Diego, Parks and Recreation Department for stepping up and acquiring the parcel as open space for all residents of San Diego County to enjoy. The support of Supervisor Bill Horn and the County Board of Supervisors for recognizing the value of this habitat is also greatly appreciated by TECC, for in the end, without their support and financial commitment, this acquisition would not have been possible.



TECC continues to work on several other acquisitions in and around the EFRR. Recently a slate of parcels adjacent to EFRR was identified by the County of San Diego, Parks and Recreation Department, as prime for acquisition for preservation. These parcels total an additional 200 acres that could be set aside by the middle of 2010. TECC remains active in assisting with this project.

TECC continues to search for funding for the Council Ridge Project, a 400 acre combination of parcels on the west side of Daley Ranch.

As we pointed out in our last newsletter, now is the time to acquire lands for open space. Already there have been signs that our economy is beginning to recover and this may mean the closing of a window of

opportunity to save some of these lands from future development. In the past year your generous donations to the TECC Land Acquisition Fund were leveraged at a ratio of greater to 100 to 1. With some hard work, dedication, and timely donations, TECC could save as much as an additional 1500 acres of land in the Escondido Creek watershed in the coming months.

**Kevin Barnard - Land Acquisition Committee Member**



# WATER QUALITY UPDATE



TECC's Water Quality Committee is actively engaged in two significant ongoing endeavors that concern the health of Escondido Creek. Our most substantial project is the ongoing effort to develop a rescue hatchery for endangered southern steelhead on TECC-owned land along the creek. With letters of support from both the National Marine Fisheries Service and California Department of Fish & Game, the committee is pursuing several grants to help subsidize the first two phases of this project, which include the preparation of a master plan for the facility, permitting, the collection of water quality data, and the identification of any possible stream rehabilitation efforts that may be necessary to accommodate the hatchery. As support for this project continues to grow, so too does the excitement over the chance to leverage the open space that TECC has preserved for the additional benefit of actively saving an important historic native species that is severely threatened.



Our second project is helping to facilitate a study of the feasibility and potential impact of de-channelizing Escondido Creek (i.e., removing the concrete) throughout its reach in downtown Escondido. Escondido Councilwoman, Olga Diaz, has successfully obtained support from the Escondido City Council for this feasibility study, which will be conducted by researchers at the California State Polytechnic Institute at Pomona. These researchers selected Escondido Creek in a competitive process as one of several such de-channelization sites to be studied as a part of larger study.

Both of these activities are exciting projects that further TECC's goal of protecting and improving the water quality and natural habitat of Escondido Creek.

**Brent Alspach, Chairperson of Water Quality Committee**

---

## Docents Needed at the Elfin Forest Interpretive Center Honoring Susan J. Varty

Do you love the outdoors? Do you want to help your community and the environment? If your answer to these questions is yes, then you may want to think about volunteering at the Elfin Forest Recreational Reserve (EFRR). Right now the EFRR Parks Department is in need of volunteers to help staff the newly completed Interpretive Center which is located in the EFRR staging area (8833 Harmony Grove Rd). Open since June 2009, the Center serves as a focal point of learning and will help to educate the public about the EFRR, and our local natural resources through art, hands on activities and multimedia programs.



Examples of what you could be doing with your donated time at the EFRR may include:

- \*Interacting with the public.
- \*Learning about our local natural resources and how to protect them.
- \*Helping to educate adults and children about how they can protect and preserve their local natural areas.
- \*Helping to inform visitors of park rules and regulations.
- \*Assisting Park Rangers and staff in developing and administering programs at the center.
- \*Be involved with Park Ranger offered training which will help to educate and inform the volunteer on park operations, resource management, and public safety.

To be a volunteer at the EFRR you must fill out and submit an application. In order to obtain an application please visit the OMWD's website at [www.omwd.com](http://www.omwd.com) or by contacting the EFRR office at 760-632-4212. To mail in your application send it to: 1966 Olivenhain Rd., Encinitas CA 92024 Attention: Parks Department.

**Jeff Anderson Parks Department Supervisor Elfin Forest Recreational Reserve  
Olivenhain Municipal Water District**

# The Elfin Forest Interpretive Center Always Has Something New...

## Events at the Center during February and March:

- 2009 Winners of the Annual Elfin Forest Recreational Reserve Photo Contest on display: These new large photos share some of the beauty and unique qualities of the Reserve through the eyes of both adult and child photographers. Thanks to Rangers Jeff Anderson and Ryan Works for coordinating this contest.
- Monthly docent hikes in the Reserve: Come and get in shape for the new year. Scheduled for the third Saturday of each month, pending weather, meet at the Interpretive Center at 8:30. The hike will last approximately an hour and a half. Next one February 20. If rain is in the forecast please call the Ranger staff at (760) 632-4212 to confirm if the Reserve is open.
- Scientist Tom Munnecke at the Center monthly: Bring the kids to explore the microscopic world in a drop of stream water through our video microscope. Dates/times to be announced.
- Speaker Series: Our very successful series of quality speakers on topics relevant to the watershed will begin in March. Dates and times will be announced.
- Our 2010 featured artist, Artist Robert Ferguson, begins his work: As a part of our Art and Nature Program, Robert Ferguson will be painting 8 large oil paintings of scenes in and around the Reserve. Supporting one of our goals at the Center to enhance the appreciation of our watershed through the eyes of an artist, Mr. Ferguson will be display his work during the months of April, May, and June at the Center.



## Update on improvements to the Center in the next few months:

- Beautiful metal sculpture: Gifted metal sculpture artist Jennifer Coburn has been commissioned to construct two metal sycamore trees to adorn both sides of the entrance to the Center. Branches will extend over the upper window and include leaves with embedded fall colored stain glass providing an equally beautiful view from both inside and outside the building.
- Interior columns: Tile work will be completed soon on the two interior columns by James Hubbell and tile artist Dave Ferrin to complement our ceiling mural and handcrafted tile floor design.
- Children's science lab: This is due for completion this spring thanks to the volunteer work of Elfin Forest resident and cabinetmaker Joan Hershfeld. This unique center will always offer our younger visitors an exciting experience upon entering the center with interactive docent directed activities.
- Completion of the photovoltaic building: We will be hooked up to the Sun. Thanks to volunteers Chuck Weber and Tim Costanzo, this building will be complete by spring.
- Native Plant Garden labels: A collaboration of Jennifer Coburn and Tim Costanzo has resulted in artistic plant labels in the shape of native Engelmann oak leaves to identify our native plants in the garden surrounding the center.
- Photo Display: Due to be completed soon, this will enable us to display 16 images and text.



## How can I be involved?

- Be a docent: Join our dedicated group of 12 docents. We will train you and shift times are very flexible. Both weekend and weekday times are available (see article by Jeff Anderson on page 3 for further details).
- Earth Day, Saturday, April 17: Save this Date! Mark the Calendar! Most of the mentioned improvements will be completed. Robert Ferguson's paintings will be on display. This will be a great family event celebrating our amazing watershed.
  - The Center is open on weekends, 9:00-3:00 and some Friday mornings. Plan a visit and bring the whole family. We even have a biscuit for your dog.



**Jeff Swenerton Chairperson of the Interpretive Center Advisory Committee**

---

## LAND MANAGEMENT UPDATE

Three activities completed by the Land Management Committee this past January pretty well describe what we do . . .

First, the paperwork – January is report time. The field notes from our monthly site visits, along with bird and vegetation surveys, and an accounting of monies spent were compiled into a formal Annual Report submitted to the County of San Diego and the wildlife agencies. The reports allow tracking of the onsite natural communities over time and help us fine tune our management practices.

Second, the maintenance work – The Management Committee completed the clean up of the 119 acre Family Stations property to ensure it was in good shape for transfer to the County. We hauled two old vehicles out from a ravine and moved several truckloads of old wood, metal and assorted debris to the recycling center or the dump.

Third, the fun work – TECC hosted the annual OMWD tree planting event on January 23<sup>rd</sup>. Thirty trees and shrubs (Live oak, Sycamore, and Lemonade Berry) were planted on Conservancy property just downstream from the EFRR parking lot. OMWD rangers organized the trees and volunteers with shovels, we provided the location - an area where Eucalyptus trees were removed several years ago. The time delay allowed the soil to detoxify from the Eucs and for a few existing oaks and sycamores to recover. The planting supplements natural recruitment and will speed the restoration process. It was a fun day and an example of the cooperative relationship we have built with OMWD and others in seeing that the proper stewardship of Escondido Creek open spaces gets done.

If any of this sounds like something you'd like to help out with – please contact the TECC office. There will be on going exotic plant removal work days in 2010 and there is a camper shell or two out in the sage that need to be extracted.

**Leonard Wittwer - Chairperson of the Land Management Committee**

The Escondido Creek Conservancy (TECC) is a non-profit public benefit corporation dedicated to the preservation, enhancement, and protection of the natural open space within the Escondido Creek watershed. We support educational programs and compatible outdoor recreation within the watershed for the benefit of all residents of the area.

The Escondido Creek Conservancy Board of Directors

Steve Barker	President	Tim Costanzo	Director
Jeff Swenerton	Vice President	Jerry Harmon	Director
Brent Alspach	Secretary	Laura Mitchell Ph.D.	Director
Jon Dummer	Treasurer	Jack Olmstead	Director
Kevin Barnard	Director	Leonard Wittwer	Director

# We Need Your Help

The Escondido Creek Conservancy has made great progress during 2009 in the acquisition of many additional acres of preserved open-space land, implemented innovative educational programs, and completed construction of the Elfin Forest Interpretive Center. **Our primary source of funding for our work comes from private donors such as you. Please help us in 2010 with an annual membership donation!** (See below for application form).

**Please join our conservation efforts by becoming a member or renewing your membership for 2010**

**Complete and detach the form below and mail to TECC, P.O.Box 460791, Escondido, CA 92046**

Cut here...

Cut here...



Yes! I support TECC's mission of watershed protection. Here's my gift...  
Please make checks payable to: The Escondido Creek Conservancy

**Membership Levels**

- Friends of the Creek - \$50
- Protectors of the Creek - \$1,000
- Advocates of the Creek - \$5,000
- Defenders of the Creek - \$10,000
- Guardians of the Creek - \$20,000
- Other amount - \_\_\_\_\_

Name \_\_\_\_\_ Date \_\_\_\_\_

Address \_\_\_\_\_

City \_\_\_\_\_ St \_\_\_\_\_ ZIP \_\_\_\_\_

Phone (\_\_\_\_) \_\_\_\_\_

Email \_\_\_\_\_

My Company will match my gift: \_\_\_\_\_

\_\_\_\_\_ I would like to volunteer. Please send information.

\_\_\_\_\_ I have included TECC in my Estate Plans.

Please charge my credit card:  One time  Monthly

Visa  MasterCard  Amex

Credit Card No. \_\_\_\_\_

Exp Date \_\_\_\_\_ Sec Code on Back of Card \_\_\_\_\_

Authorized Signature \_\_\_\_\_

Name as it appears on card \_\_\_\_\_

All gifts are tax-deductible to the fullest extent of the law.  
Securities area also acceptable-Please contact TECC at  
760.471.9354

Mail to: TECC  
PO BOX 460791  
Escondido, CA. 92046

**Elfin Forest/Harmony Grove Town Council Board members: Eric Anderson 471-1464, Jacqueline Arsivaud-Benjamin 891-9061, Bonnie Baumgartner 510-1175, Melanie Fallon 744-7090, May Meintjes 744-7336, Manu Sohaey 510-9114 and Bill Telesco 746.4692.**

*The **Chaparral** is published quarterly by the Town Council Board (a 501c3 non-profit corporation) and is distributed to residents of the Elfin Forest and Harmony Grove communities and elsewhere. To protect you from unwanted junk mail and solicitations, the **Chaparral** mailing list is not shared with anyone. **This newsletter is copyrighted. Unauthorized reproduction in any form is strictly prohibited.***

*Articles of up to 500 words should be sent to newsletter editor, **Betsy Keithley**, at [ekeithley@ucsd.edu](mailto:ekeithley@ucsd.edu) for inclusion in the next issue. Anonymous articles will not be published. Space limitations may cause articles to be held over to the next issue or edited for brevity. Articles considered unsuitable for publication will not be published. If you are new to the area and your name is not correct on the address label, please contact Melanie Fallon.*

NON PROFIT ORG  
U.S. POSTAGE  
PAID  
Escondido, CA 92029  
Permit No. 779

20223 Elfin Forest Rd. Elfin Forest, CA 92029

